



GIS-R10

High Performance Hotspot Gateway



- Low cost Internet Hotspot Gateway
- Dual WAN with load balance and fail-over
- Four independent isolated LAN ports
- Cloud system for monitoring & management
- Plug and play: easy to use install wizard
- Selection of login pages or custom design
- Provide free Internet access after agreement to custom terms and conditions
- Provide controlled access using tokens for free or charged Internet access
- Provide access using PayPal® or credit card
- Provide access using social media (Facebook™)
- Usage reporting to track utilization
- Firewall to protect your business & users
- Firewall for PCI DSS compliance
- Bandwidth control (QoS), apply speed and data limits to users
- Website URL, IP and MAC filters
- Content filter for websites management
- Block access outside business hours
- Access point failure monitoring and alerting
- Remote configuration of GIS unit
- API for management & PoS applications
- Settings backup and restore

Many businesses offer free wireless Internet for guests, or else charge for the Internet service. The GIS units make providing such a service safe and simple.

Main features include displaying a customized login page, capturing user data for marketing, and managing users with a range of powerful tools.

The GIS units are a powerful marketing tool for any business, allowing the business to advertise and promote the brand via the customized login page to every user that connects to the network.

The login pages of the GIS units can be customized either using the simple wizard or by uploading a photo, or fully customized login page.

The GIS units also protect the network from attackers, preventing access to office computers and PoS systems. Having an open network introduces risk to a businesses network which can be mitigated with the cyber-security features of the GIS unit.

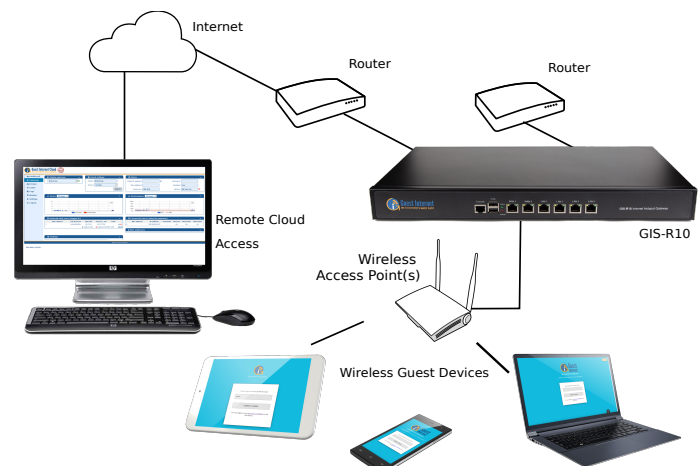
A common problem that occurs when offering an open Internet access to guests, is that the business owner can be liable for the activity on the network. The GIS unit captures all required information to help authorities identify who is using the network for an illegal activity.

The GIS unit can be configured to provide content filtering via OpenDNS or any other service. Using this functionality it is possible to block access to websites based on categories, to provide a safe browsing experience for guests.

Bandwidth controls to improve the quality of service (QoS) on the unit can be enabled to limit user download and upload speeds, spreading the available bandwidth evenly between users.

The GIS units are all simple plug and play installations, requiring no specialist knowledge.

There are absolutely no other charges and no monthly fees. Firmware upgrades and on-line support are always free.





Guest login using:



Custom Login pages



Create custom login pages to increase brand awareness and offer promotions

Free Cloud Management



Manage Users, codes and settings for multiple sites remotely from a single location

Very easy and simple configuration



No technical knowledge is required, the setup wizard leads you through the configuration

A free service or sell Internet access



Select one of many different options to provide Internet access for guests and visitors

Print access vouchers for guests



Use the GIS-TP1 or any type of printer to print access code vouchers for guests and visitors

GIS-R10 Technical Specifications

Gateway Features

- ▶ Cloud management (optional)
- ▶ Plug and play with the setup wizard
- ▶ Firewall blocks access from LAN to WAN
- ▶ Local and remote configuration
- ▶ Content filtering with OpenDNS
- ▶ Download/Upload speed control
- ▶ Allowed IP and MAC addresses
- ▶ Free and Controlled Internet access
- ▶ Schedule to set availability
- ▶ Access point failure monitoring
- ▶ Peer to peer (P2P torrent) blocking
- ▶ Facebook and email login for data collection

Authentication

- ▶ No limit to the number of users
- ▶ Throughput: up to 400Mb/s
- ▶ Access code database: 10000

API for PoS Interface

- ▶ PoS integration sell access codes, create, delete, view and manage via HTTP

Ethernet (dual-WAN)

- ▶ WAN1-WAN2: RJ-45 Gb
- ▶ LAN1 - LAN4: RJ-45 Gb

Operation

- ▶ Commercial grade equipment suitable for installation in any non-industrial environment

Dimensions & Power

- ▶ Enclosure: 44cm x 26cm x 4.5cm (1U)
- ▶ 110v/220v supply 40W

Warranty

- ▶ 1 year for product defects

Login Page Option

- ▶ Unique user code login
- ▶ Purchase code with PayPal or credit/debit card
- ▶ Voucher edit/print for cash sale
- ▶ Social Media login with Facebook
- ▶ Login with Email for data capture
- ▶ Disclaimer mode
- ▶ Open access mode

Customization

- ▶ Custom branding with the login page generator
- ▶ Upload custom background image
- ▶ Full customization with HTML and CSS login pages. Uploaded via the admin interface

Call 1-800-213-0106 for further information, or see our website: www.guest-internet.com
Fire4 Systems Inc, Guest Internet Solutions, 6073 NW 167 St., Suite C12, Hialeah, FL 33015, USA.