



GIS-R20

High Performance Hotspot Gateway



- High performance Hotspot Gateway for large scale applications
- Built with the latest generation Intel dual core processor; 2GB RAM and 32GB SSD storage supporting up to 600Mb/s throughput
- Cloud system for monitoring & management
- Plug and play: easy to use install wizard
- Selection of login pages or custom design
- Provide free Internet access after agreement to custom terms and conditions
- Provide controlled access using tokens for free or charged Internet access
- Provide access using PayPal® or credit card
- Provide access using social media (Facebook™)
- Usage reporting to track utilization
- Firewall to protect your business & users
- Firewall for PCI DSS compliance
- Bandwidth control (QoS), apply speed and data limits to users
- Website URL, IP and MAC filters
- Content filter for websites management
- Block access outside business hours
- Access point failure monitoring and alerting
- Remote configuration of GIS unit
- API for management & PoS applications
- Settings backup and restore

Solve the technical and logistical problems associated with large-scale public Internet WiFi Hotspot deployments

- ◆ Manage thousands of users through the intuitive Cloud interface.
- ◆ Optimize resources to maximize the number of users that can be supported by multiple bandwidth limited Internet circuits
- ◆ Customize any aspect of the deployment, from the splash page branding to a custom user interface for interactive marketing

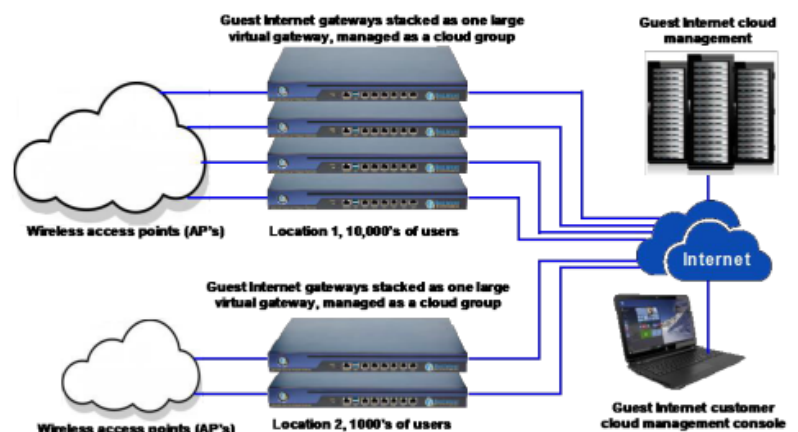
Improve the Hotspot User Experience through Efficient Resource Management

The critical question when designing a large-scale public Internet Hotspot system is how much bandwidth will be required. More often the question is about how to maximize the number of users when the Internet bandwidth available is limited. Guest Internet answers such questions with several features that permit efficient resource management by supporting the maximum number of users with limited Internet bandwidth. Management features include; per-user traffic speed and data limits, restrictions on access to high bandwidth websites, blocking of file sharing protocols, and blocking of computers infected by any type of DoS virus.

Large Custom Project Implementation

The Guest Internet technical architecture was designed for very large-scale Hotspot systems that have many thousands of users. Furthermore the design features can be customized for specific requirements of the large project. Large Hotspot projects that use Guest Internet products include sports stadiums, airports, trade shows and public parks. The Guest Internet architecture is able to accommodate very large custom projects because of specific design characteristics:

- ◆ Advanced features that permit monitoring and management of many users, and failure monitoring of network infrastructure.
- ◆ Cloud group management features, permitting multiple gateway units to be managed as one large virtual gateway.





Guest login using:



Custom Login pages



Create custom login pages to increase brand awareness and offer promotions

Free Cloud Management



Manage Users, codes and settings for multiple sites remotely from a single location

Many large scale public Internet projects have been implemented with Guest Internet products

Trade Shows

Provide an optimized Hotspot service for visitors, exhibitors and administration staff. Monetize visitor Internet while providing exhibitor services.

Sports Stadium

Tens of thousands of sports fans can get access to sports information in real time. Facilitate stadium services through custom login pages.

Large Hospital Networks

Many hospital groups have deployed Guest Internet gateways to provide a Hotspot Internet service for patients and visitors.

Airports

Build a high performance airport Hotspot service for travelers, staff and concession holders, with low operating cost, low maintenance.

Public Parks

Public parks, RV parks and campgrounds present a unique challenge for the Hotspot service installer and provided, GIS will help.

Hotel Groups

Hotel groups and resorts take advantage of Guest Internet features to provide benefits for guests, special features include support for loyalty programs.

GIS-R20 Technical Specifications

Gateway Features

- ▶ Cloud management (optional)
- ▶ Plug and play with the setup wizard
- ▶ Firewall blocks access from LAN to WAN
- ▶ Local and remote configuration
- ▶ Content filtering with OpenDNS
- ▶ Download/Upload speed control
- ▶ Allowed IP and MAC addresses
- ▶ Free and Controlled Internet access
- ▶ Schedule to set availability
- ▶ Access point failure monitoring
- ▶ Peer to peer (P2P torrent) blocking
- ▶ Facebook and email login for data collection

Authentication

- ▶ No limit to the number of users
- ▶ Throughput: up to 600Mb/s
- ▶ Access code database: 10000

API for PoS Interface

- ▶ PoS integration sell access codes, create, delete, view and manage via HTTP

Hardware

- ▶ Intel 64bit dual-core processor
- ▶ 2GB RAM and 32GB SSD
- ▶ Six Ethernet Gbit ports

Ethernet

- ▶ WAN1-WAN2: RJ-45 Gb
- ▶ LAN1 - LAN4: RJ-45 Gb

Dimensions & Power

- ▶ Enclosure: 43cm x 30cm x 4.5cm (1U)
- ▶ 110v/220v supply 24W

Warranty

- ▶ 1 year for product defects

Login Page Option

- ▶ Unique user code login
- ▶ Purchase code with PayPal or credit/debit card
- ▶ Voucher edit/print for cash sale
- ▶ Social Media login with Facebook
- ▶ Login with Email for data capture
- ▶ Disclaimer mode
- ▶ Open access mode

Customization

- ▶ Custom branding with the login page generator
- ▶ Upload custom background image
- ▶ Full customization with HTML and CSS login pages. Uploaded via the admin interface

Call 1-800-213-0106 for further information, or see our website: www.guest-internet.com
Fire4 Systems Inc, Guest Internet Solutions, 6073 NW 167 St., Suite C12, Hialeah, FL 33015, USA.